

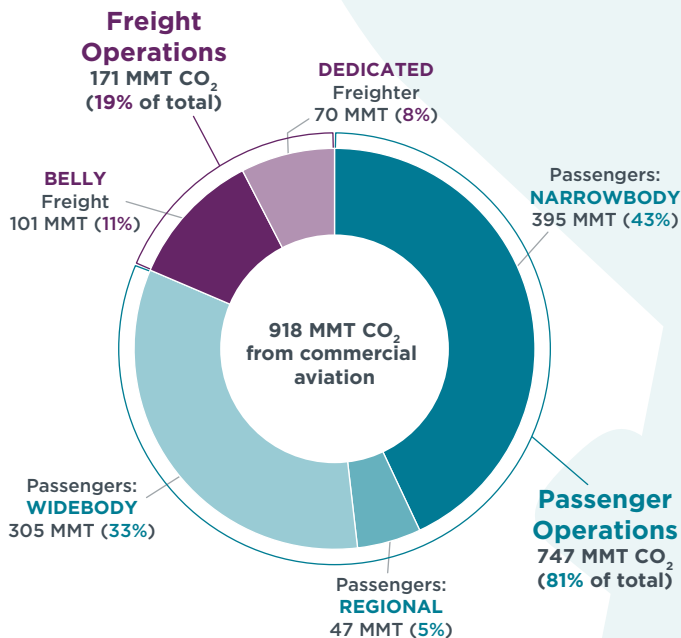
CO₂ EMISSIONS FROM COMMERCIAL AVIATION, 2018

To better understand the carbon emissions associated with commercial aviation, this study developed a bottom-up, global aviation CO₂ inventory for calendar year 2018.

918 million metric tons (MMT) CO₂ from passenger and freight transport

32% increase since 2013, using IATA values

38 million passenger flights (67% domestic / 33% international)



TOP CO₂ EMITTERS

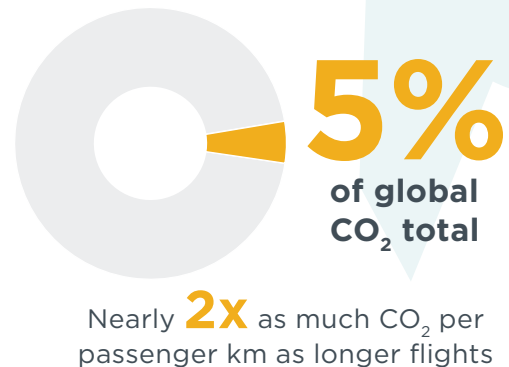
(based on country of departure)

- United States**
182 MMT
 24% of global total
 69% from domestic operations
- European Union**
142 MMT
 19% of global total
 47% from in-bloc operations
- China**
95 MMT
 13% of global total
 69% from domestic operations

PASSENGER CO₂ EMISSIONS

- 1/3** occurred on **short-haul flights** (less than 1,500 km)
- 1/3** occurred on **medium-haul flights** (1,500 km to 4,000 km)
- 1/3** occurred on **long-haul flights** (greater than 4,000 km)

FLIGHTS ≤ 500 km



For the full study: www.theicct.org/publications/co2-emissions-commercial-aviation-2018